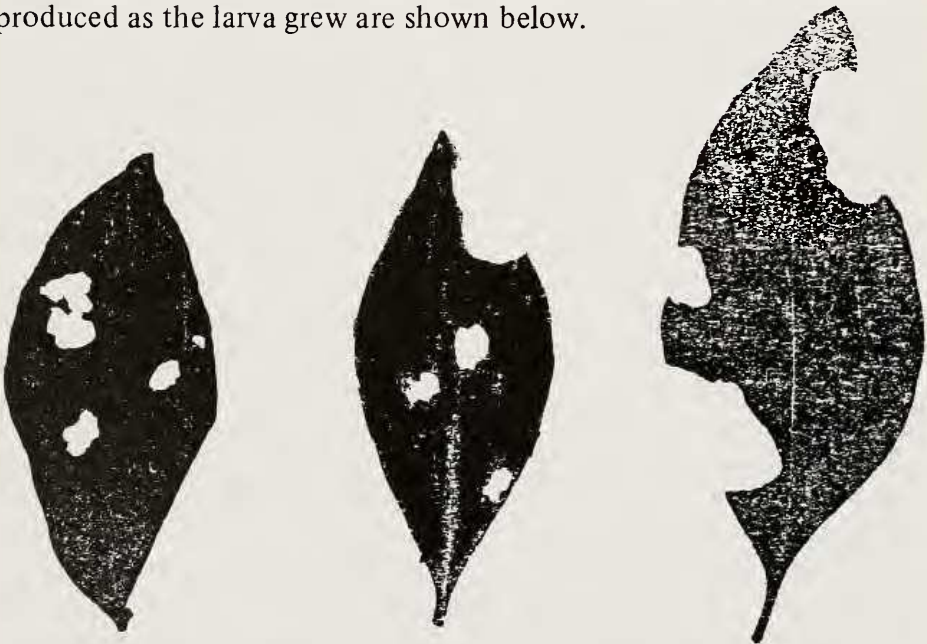


### References

- Manley, W. B. L. & Allcard, H. (1970) *A Field Guide to the Butterflies and Burnets of Spain*, 192 pp, 41 plates.
- Manley, W. B. L. (1973) A Guide to *Acleris cristana* (D. & S.) (Lep.: Tortricidae) in Britain *Ent. Gazette*, **24**: 89-206.
- Tremewan, W. G. (1986) W. B. L. Manley (obituary) *Antenna*, **10**: 68-9.
- 

SAWFLY DAMAGE TO HONEYSUCKLE SIMILAR TO THAT OF THE BROAD-BORDERED BEE HAWKMOTH — On 18.vii. 1987 some colleagues and I were searching for larvae of *Hamearis fuciformis* L., the broad-bordered bee-hawk, in a South Wiltshire locality. A tip that is often given, for example in South's *Moths of the British Isles*, is to look for a leaf of honeysuckle with round holes on each side of the mid-rib. We found a number of leaves matching this description, but no hawkmoth larvae.

Several sawfly larvae were found. One was collected and confined with undamaged honeysuckle leaves, and the feeding patterns produced as the larva grew are shown below.



The larva unfortunately died before it could be identified, but Lorenz and Kraus (*Die larvensystematik der Blattwespen — Tenthredinoidea und Megalodontoidea* (1957)) list eleven species of sawfly found on honeysuckle and its related cultivars.

I am forced to conclude that the only evidence for the presence of *fuciformis* must be finding the larva itself. PAUL WARING, Nature Conservancy Council, Northminster House, Peterborough PE1 1UA.